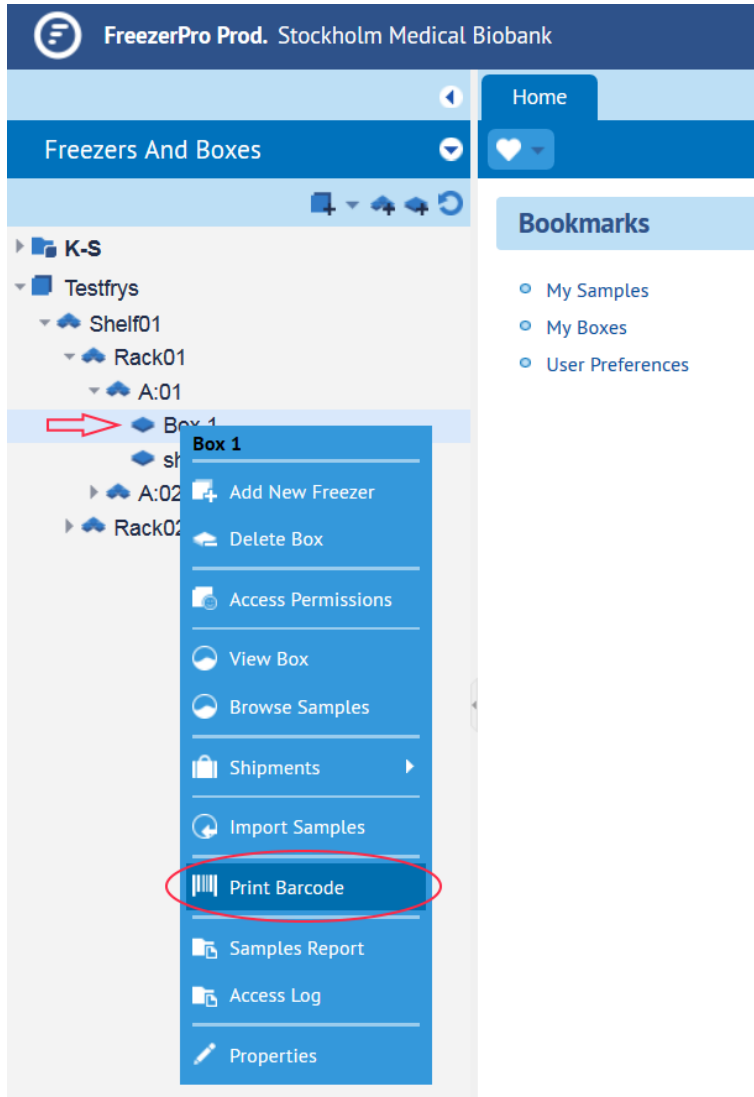


Freezerpro Print Labels

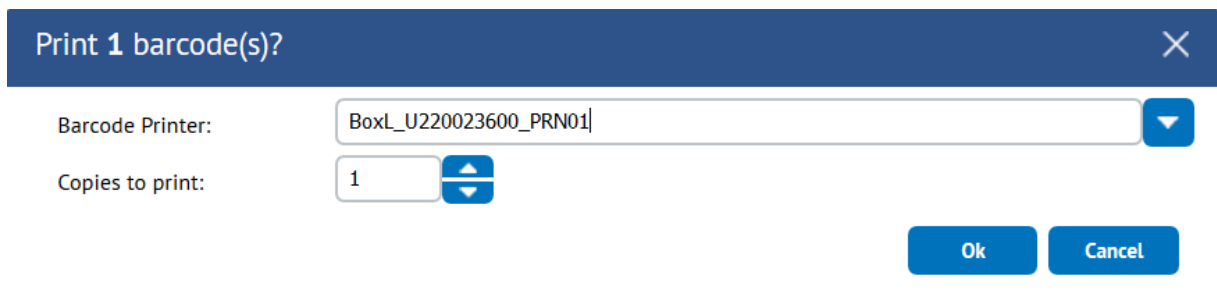
How to print box labels.

(Recommended box name length is 19 characters to fit the label size)

Right click on your box in the left pane “Freezers And Boxes”



In the drop menu, click on “Print Barcode”

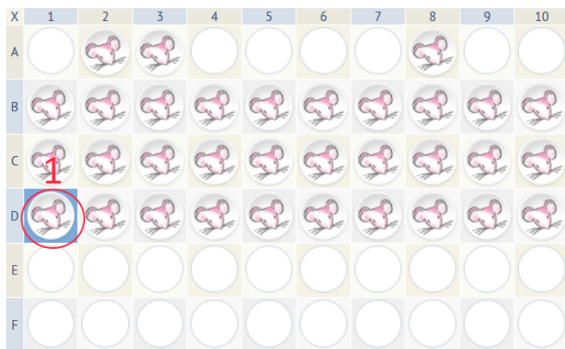


A popup window appear. Choose your Barcode Printer in the list. Press “OK” to print.

For Box labels, choose Barcode Printer where name starts with “BoxL_*”. (*=Printer name).

How to print sample labels.

(Recommended sample name length is 18 characters to fit the label size)



Mouse
ID: 81251

Position: D / 1
[Animal Sample Types](#) (Sample Types)

Description: Mouse
Barcode: **1141810**
RFID Tag: **355AB1CBC000010000229F2**
Volume: **20.0 Ex. 1.1.5.2...** (Total volume in all vials: 660.0 Ex. 1.1.5.2...)
Total number of **Mouse** vials in all freezers **33 (33 available)**

Created: 2018-08-09 Updated: 2018-11-16
Freeze-Thaw Cycle Count: 1 (Reset) **2**

Notes: [Add Note](#)

Units mL

In structured boxes, click on the sample(1) you wish to print. Click on Barcode icon(2) to print label.

<input type="checkbox"/>	Barcode	Sample ID	Sample Name	Description
<input checked="" type="checkbox"/>	1156817	156757	Mouse3	Mouse 3

In unstructured boxes (BAG), click on the sample(1) you wish to print. Click on Barcode icon(2) to print label.

Print 1 barcode(s)?

Barcode Printer:

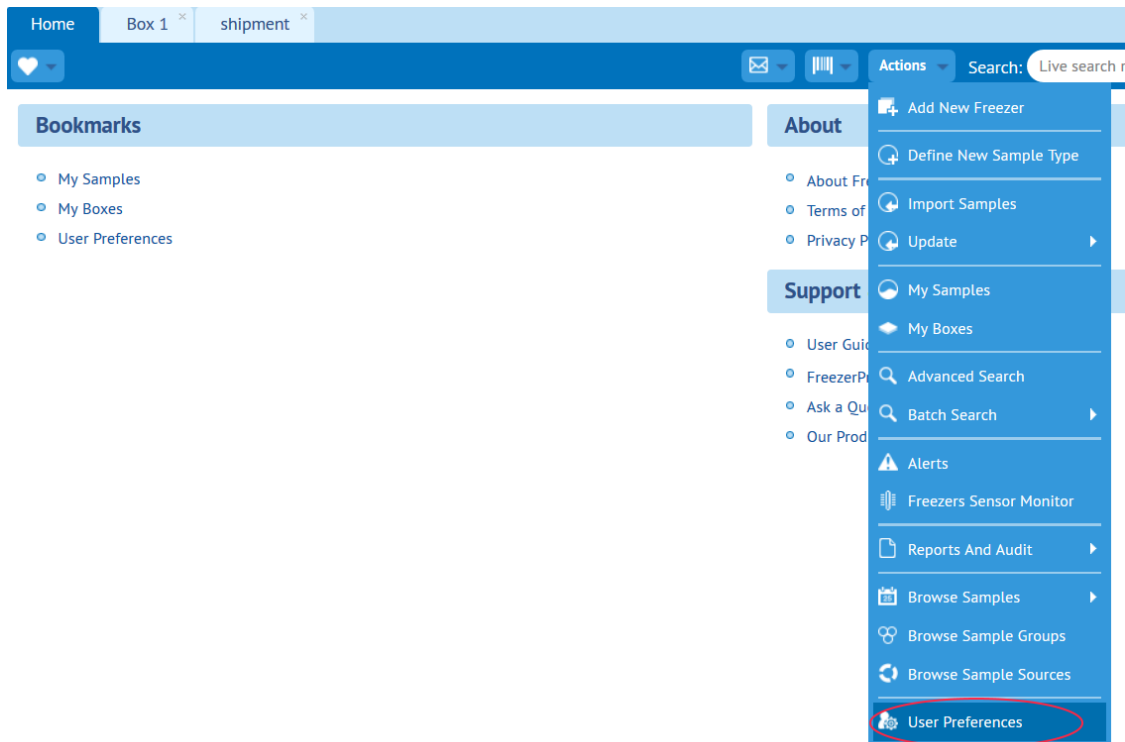
Copies to print:

Ok Cancel

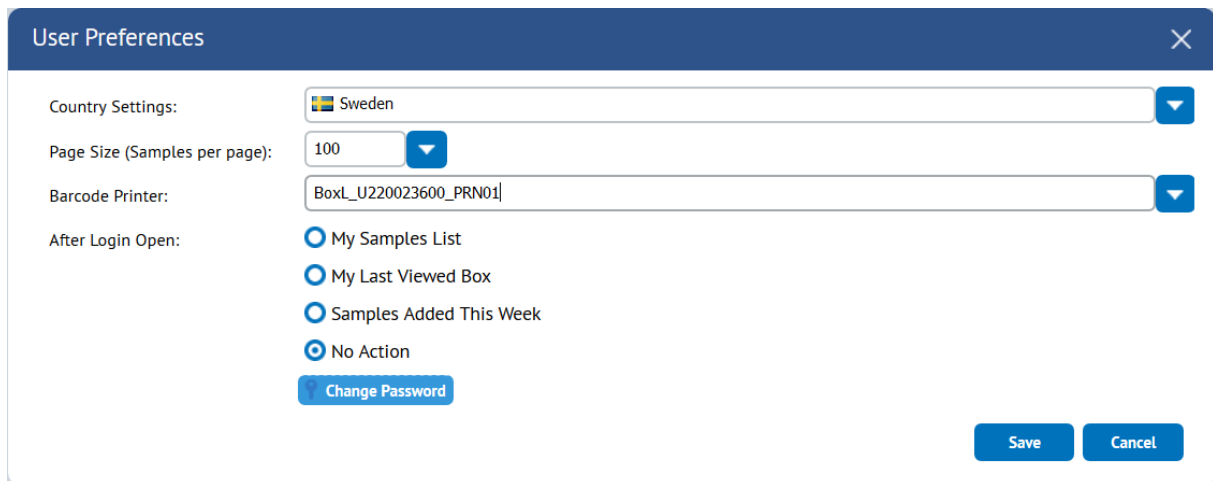
A popup window appear. Choose your Barcode Printer in the list. Press "OK" to print.

For Sample labels, choose Barcode Printer where name starts with "SampleL_*". (*=Printer name).

Set your printer as default printer
On Freezerpro Home page.



Click on “Actions” menu and then “User Preferences”.



Set your default printer by choosing your Barcode Printer in the list. Click on “Save” button when ready.